

The Snowman is a home version of the special effects machines used for years in movie productions, theaters, malls, and high end exhibits. The Snowman sprays specially formulated evaporative snow and creates a unique snowfall effect without cold air or cleanup required. This Snowman can be the centerpiece of outdoor holiday arrangements in almost any environment.

The Snowman is recommended for outdoor use.

IMPORTANT SAFETY INSTRUCTIONS

IMPORTANT PRODUCT AND SAFETY INFORMATION

Failure to follow these instructions can cause serious bodily injury or property damage.

INSTRUCTIONS PERTAINING TO A RISK OF FIRE,

ELECTRIC SHOCK OR INJURY TO PERSONS

WARNING: YOU MUST READ THE FOLLOWING

BEFORE OPERATING THE "SNOWMAN".

The Snowman is an electric product - not a toy. To avoid the risk of fire, burns, personal injury, and electric shock, **it should not be used in a manner for which it was not designed and should be placed out of the reach of small children.** Competent adult supervision is necessary to avoid the risk of electric shock or personal injury.

The Snowman sprays evaporative snow that dissipates easily when sprayed from 15 to 20 ft in the air. The Snowman may be positioned at ground level; however, there is a chance for some build-up of slippery residue on some ground surfaces (linoleum in particular). Use caution in determining locations for the Snowman and warn passers-by of potential slippery conditions.

Never operate the Snowman without liquid solution, SF-1 C AND water, in the solution bottle. Do not operate the Snowman when the gallon solution bottle is holding less than a pint of solution. If you do not follow these directions, the Snowman may be damaged.

Always operate the Snowman on a dry, level surface away from a ledge or steps to prevent any falling hazards.

Never leave the Snowman unattended while operating. Do not operate it in the rain or near standing water.

Always use an outlet with an earth grounded receptacle and a ground fault circuit interrupts (GFCI). Never operate the Snowman with a frayed electrical wire.

Do not use in extreme heat or cold.

Never use this product for any activity other than for what it is designed. Stir

the solution in the container before operating the Snowman.

SAVE THESE INSTRUCTIONS!

WARNING - When using electric appliances, basic precautions should always be followed, including the following:

- a) Read all the instructions before using the appliance.
- b) To reduce the risk of injury, close supervision is necessary when an appliance is used near children
- c) Do not contact moving parts.
- d) Only use attachments recommended or sold by the manufacturer.
- e) For a cord-connected appliance, the following shall be included:
 - To disconnect, turn all controls to the off ("0") position, then remove plug from outlet.
 - Do not unplug by pulling on cord. To unplug, grasp the plug, not the cord.
 - Unplug from outlet when not in use and before servicing or cleaning.
 - Do not operate any appliance with a damaged cord or plug, or after the appliance malfunctions or is dropped or damaged in any manner. Return appliance to the nearest authorized services facility for examination, repair, or electrical or mechanical adjustment.
- f) To reduce the risk of electrical shock, do not put the snowman in water or other

Voltage:	120V 60Hz
Fuse:	10 Amps
Size:	11" Wide, 11" Deep and 12" Tall
Weight:	7.7 Lbs
Materials:	Polypropylene (PP)
Snow Solution Usage Rate:	1.5 - 2 oz Solution Mixture per minute (approximate)
Cable Length:	6.0 Ft

General Operating Instructions:

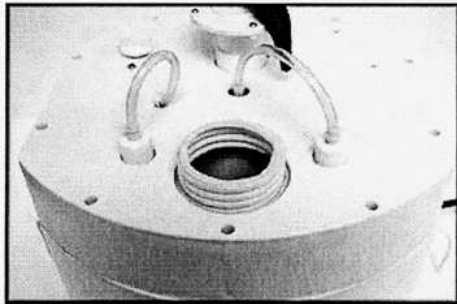
In order to create a beautiful and entertaining evaporative snowfall, ensure the safety of the operators/participants, and to protect the equipment from damage, PLEASE FOLLOW THESE INSTRUCTIONS CAREFULLY.

1. Always prepare your snowfall area; making sure it is dry and free of obstructions. Note that if the snowfall surface area is linoleum or smooth, the floor may become slippery.
2. Locate the snowman on a secure, dry, and level surface, and then rotate the snowman so that

he points in the direction you want it to spray snow. Keep the snowman unplugged from the electrical outlet while placing it in your desired location. Do not operate the Snowman from a wet surface.

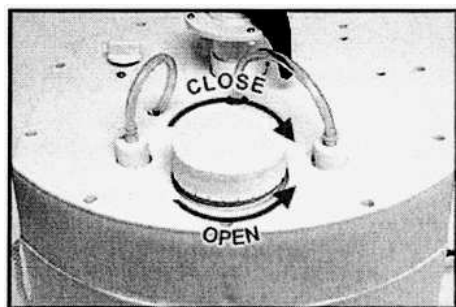
(continued)

3. Prepare the snow solution in the PLASTIC CONTAINER BUILD IN. See illustration #1.



FILL THE CONTAINER WITH WATER (leave 1/2" of space below full ring). THEN ADD ONE 4 OZ BOTTLE OF SNOW SOLUTION CONCENTRATE. If the correct water/concentrate mix is not blended properly, the snow machine may not create the ideal evaporative snowflakes.

4. Turn the cap to the container in a clockwise direction and tighten. See illustration #2.



5. In order to start the snowman simply press the red button on the side of the unit to "I" and your snowman will start (allow about 30 seconds for the pump to Prime and snow starts to fly)

6. If the solution has drained out of the clear tube during a rest period for the Snowman, it may take a minute or two for the pump to self-prime itself from the solution container liquid.

7. There is a control switch on the top of the snowman that allows you to adjust the snowfall amount. The snow should come out in a light flurry in order to evaporate properly. A heavier snow fall will tend to build up on the ground.

8. If snow is not generating properly after several uses, remove the snow sock on the top of the machine by unscrewing it from the top of the snow machine and rinse under warm water and replace.

See Illustration #3



Illustration #3

9. Do not operate at temperatures below 25 degrees Fahrenheit.

10. Do not cut or remove any of the tie straps on the motor.

11. Surface clean only, clean with damp cloth.

12. **WARNING:** To reduce the risk of electric shock, unplug before cleaning or servicing.

Operation and User Maintenance Surface clean only. Clean with

damp cloth.

Storing the Snowman:

Store The Snowman in its plastic bag and box, if possible. Do not stack other boxes or items on top of the Snowman. Store the Snowman in a cool dry environment between 40-80 degrees F.

Troubleshooting:

Snowman does not turn on	<ul style="list-style-type: none"> • Insure that correct power is applied to the Snowman
Turns on, but does not make snow - pump is noisy	<ul style="list-style-type: none"> • Insure that the proper mixture of fluid is in the reservoir and the reservoir is full • Insure that the suction tube is inserted properly in the reservoir and is not kinked

Poor quality snow	<ul style="list-style-type: none">• Insure that the snow fluid is properly mixed in the correct ratio• Clear obstructions from the Snowman hat/discharge area.
-------------------	---

If you have problems with your snow machine operation. Do not return to the store. Please call (813) 689-6269 for 24 hours tech support.